

Area Percent Rep

Data File : C:\HPCHEM\1\DATA\09W\JH04.D
Acq On : 7 Feb 09 15:15
Sample : biodiesel
Misc :

Vial: 14
Operator: AWB
Inst : GC/MS Ins
Multiplr: 1.00
Sample Amount: 0.00

MS Integration Params: autoint1.e

Method : C:\HPCHEM\1\METHODS\DIESEL.M (Chemstation Integrator)
Title :

Signal : TIC

peak #	R.T. min	first scan	max scan	last scan	PK TY	peak height	raw area	corr. area	corr. % max.	% of total
1	13.488	833	838	847	BB	5880057	97332260	97040209	18.70%	15.386%
2	14.775	940	952	960	BV 2	13366595	519152652	518865512	100.00%	82.269%
3	14.921	960	965	972	VB	740788	15261852	14790707	2.85%	2.345%

2 main peaks

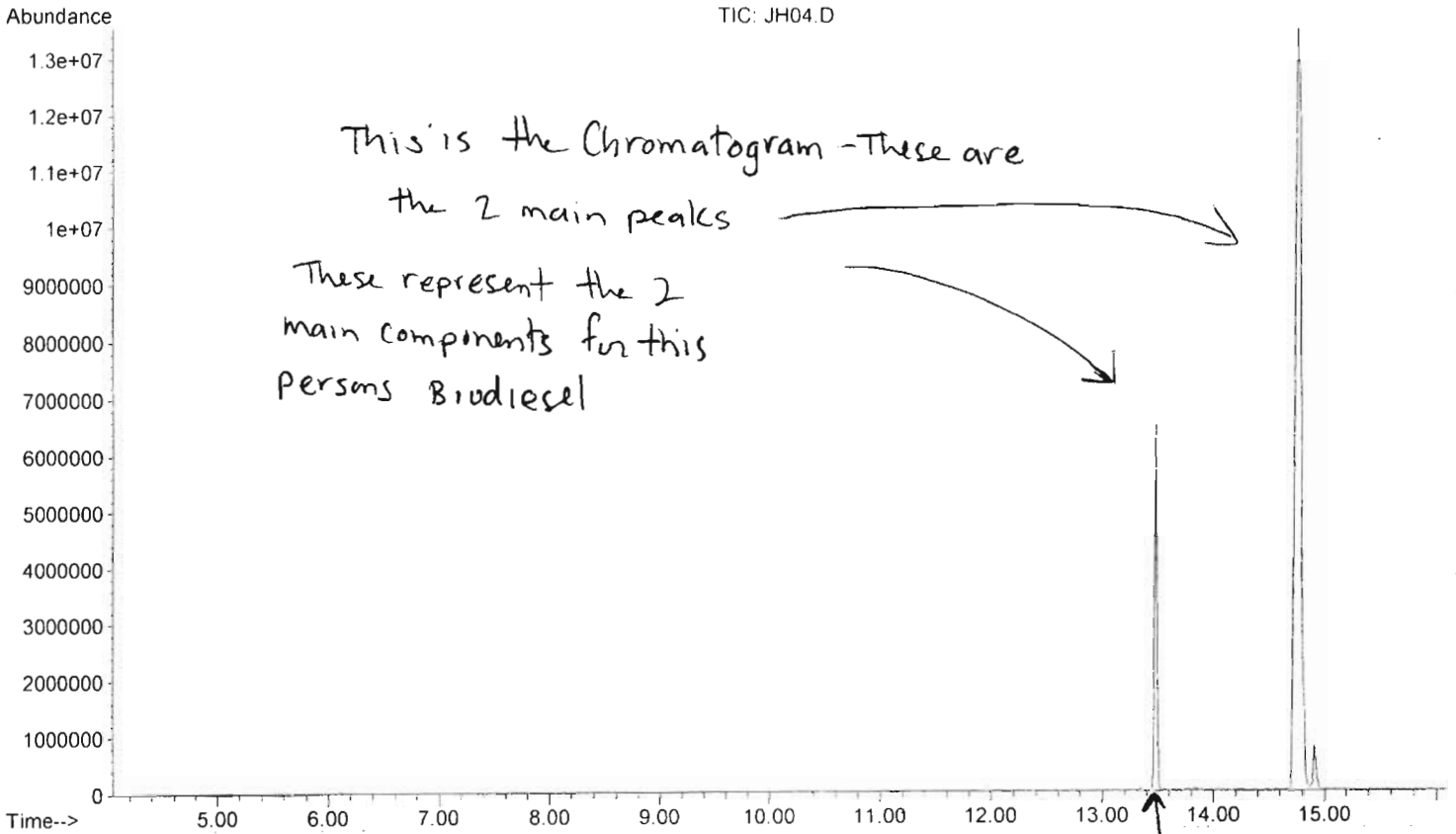
Sum of corrected areas: 630696429

JH04.D DIESEL.M Mon Feb 23 12:37:18 2009

See next page to see the Chromatogram.



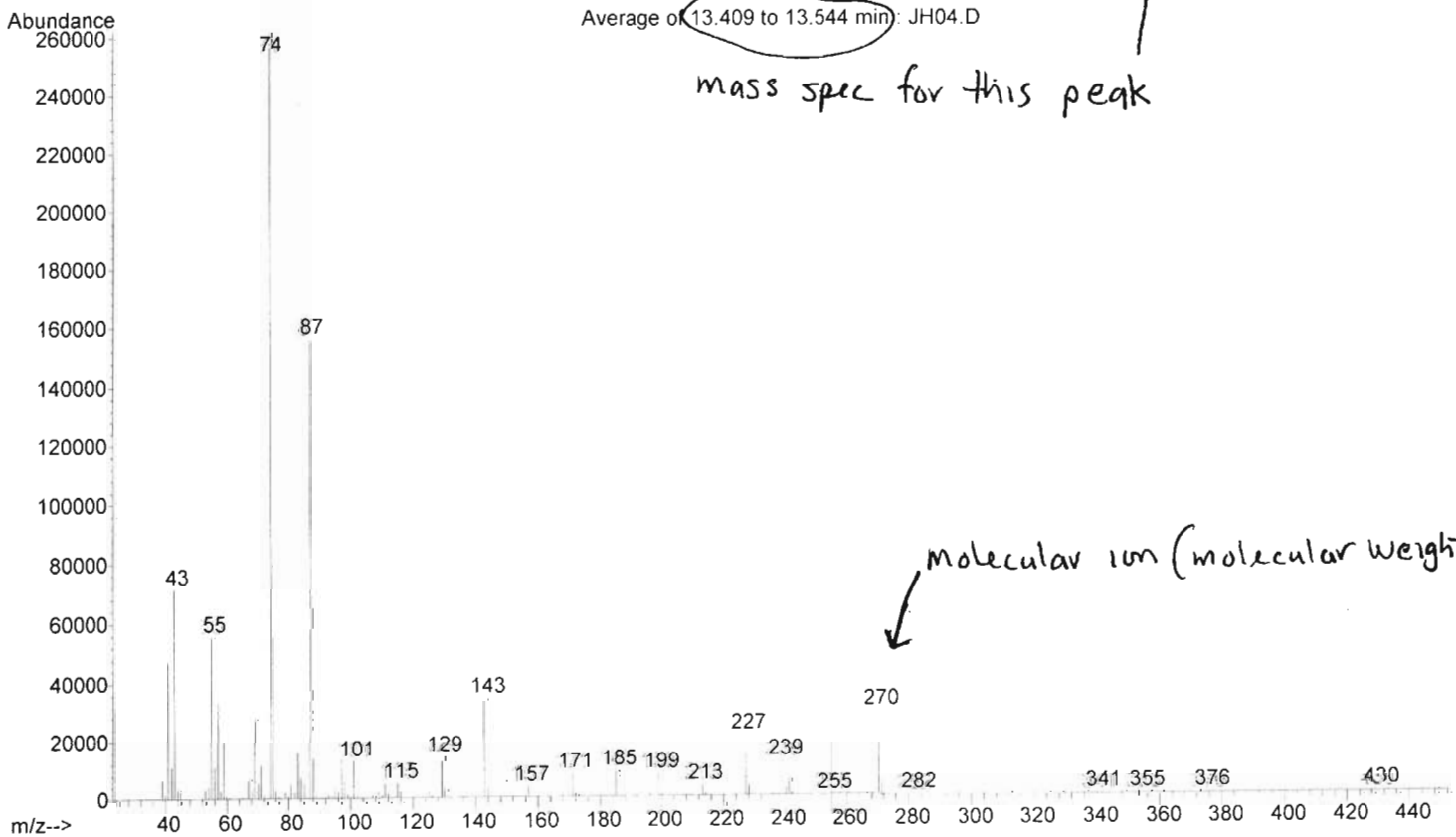
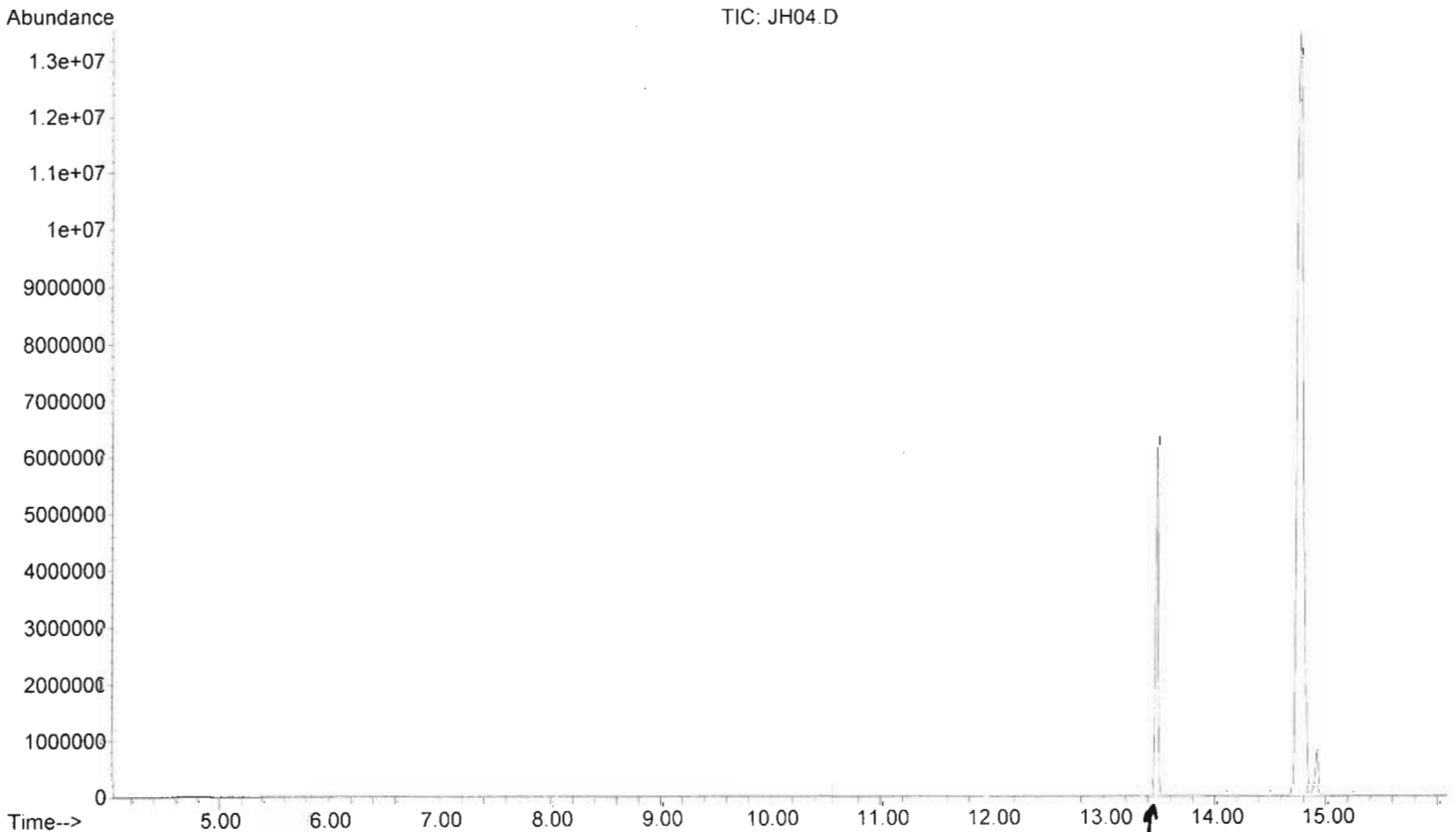
File : C:\HPCHEM\1\DATA\09W\JH04.D
Operator : AWB
Acquired : 7 Feb 09 15:15 using AcqMethod DIESEL
Instrument : GC/MS Ins
Sample Name: biodiesel
Misc Info :
Vial Number: 14



The next page shows the mass spec for
the peak at 13.5
(mins)



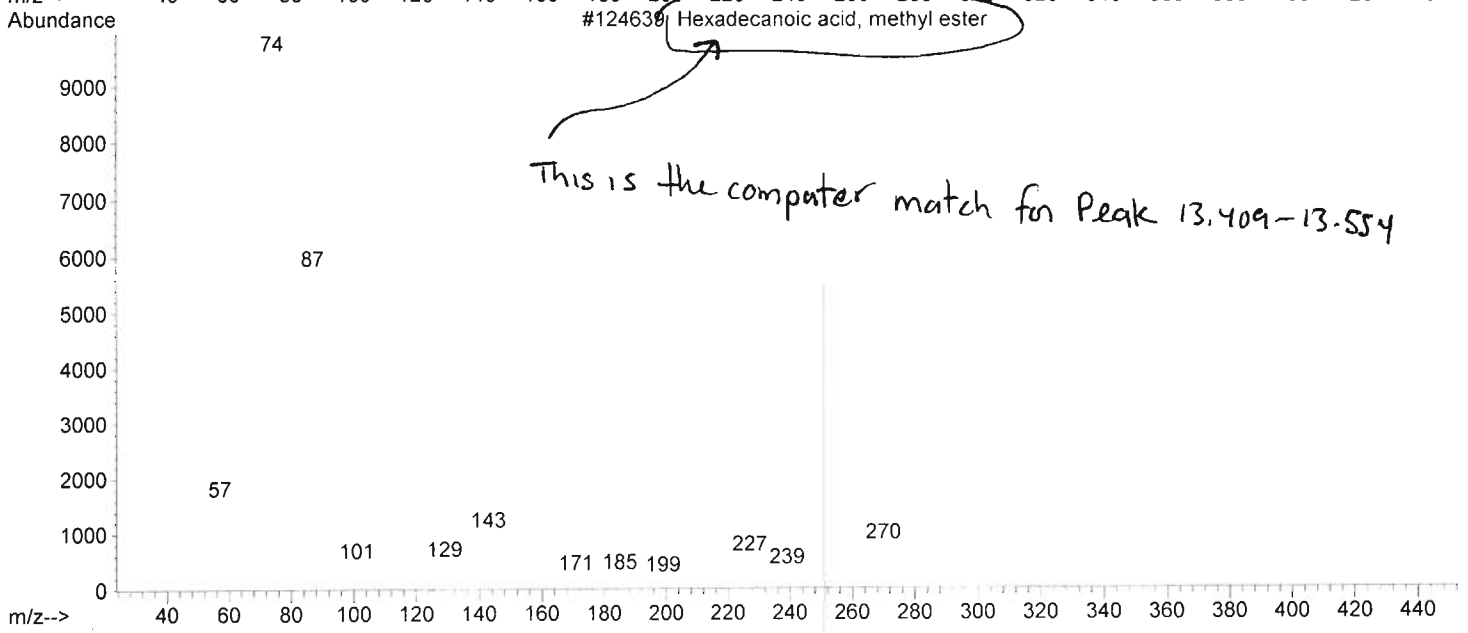
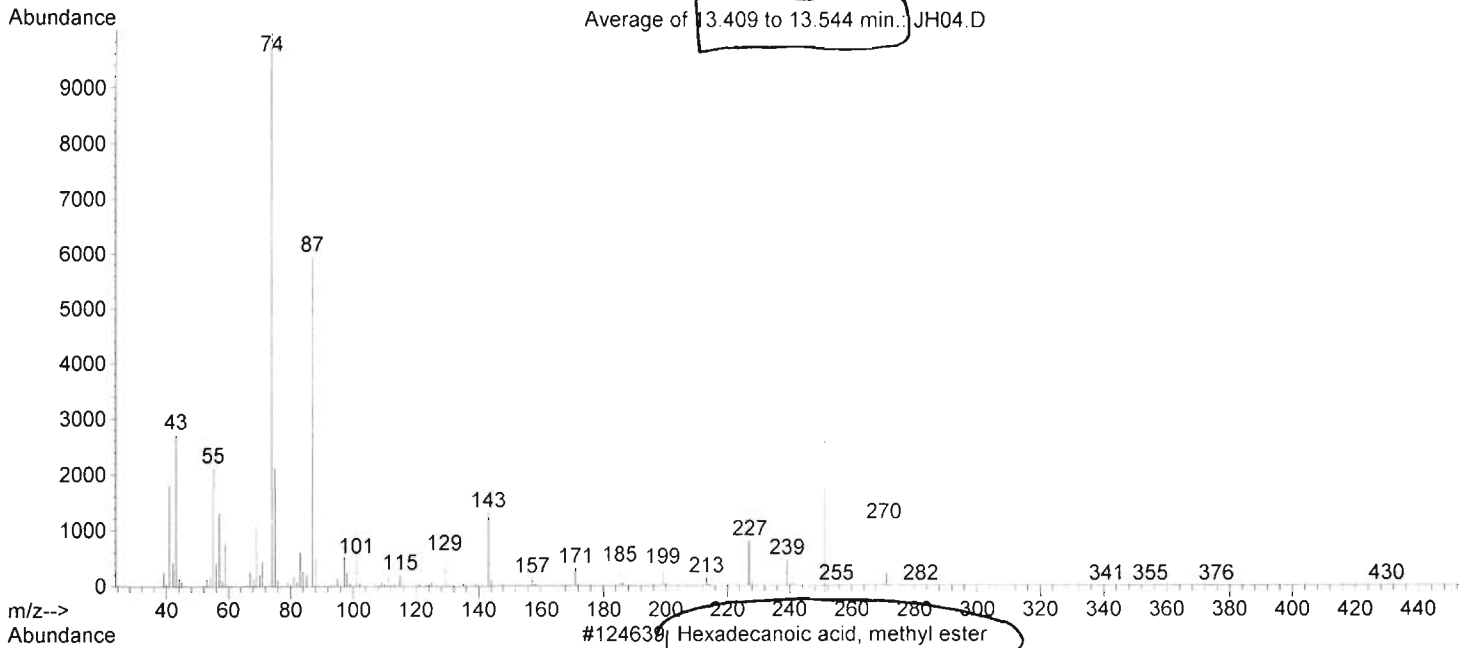
File : C:\HPCHEM\1\DATA\09W\JH04.D
Operator : AWB
Acquired : 7 Feb 09 15:15 using AcqMethod DIESEL
Instrument : GC/MS Ins
Sample Name: biodiesel
Misc Info :
Vial Number: 14



The next page shows the computer match and Identity of this peak



Library Searched : C:\DATABASE\NIST129K.L
Quality : 98
ID : Hexadecanoic acid, methyl ester



This is the computer match for Peak 13.409-13.554

Hexadecanoic acid, methyl ester is:

